

TEACHING ACROSS

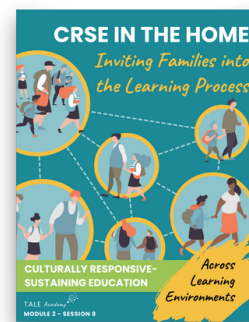
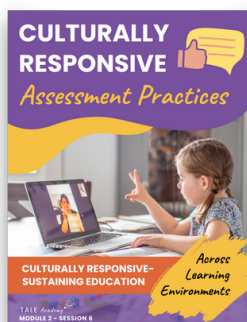
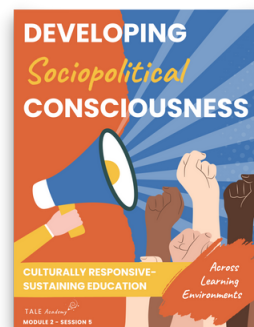
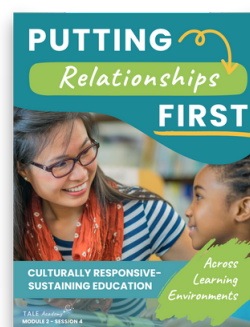
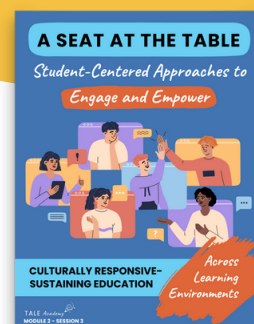
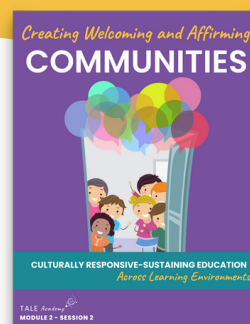
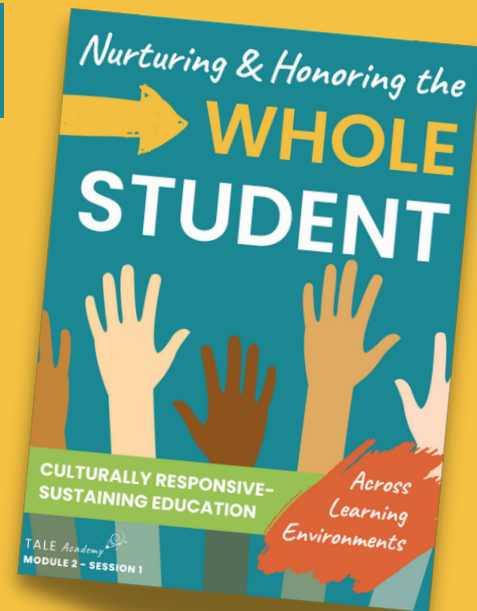
LEARNING ENVIRONMENTS

The TALE Academy is a series of free, virtual learning experiences available to all New York State educators and offers a rich array of resources on topics related to teaching across learning environments (TALE). The TALE Academy is built upon the work New York State educators carried out during emergency remote teaching (ERT) throughout the COVID-19 pandemic and extends it into the future. **TALE invites educators to think beyond online education to a broader perspective on teaching and learning that encompasses teaching across multiple learning environments (in-person, remote, and hybrid).**

MODULE 2

Module 2 – Culturally Responsive–Sustaining Education Across Learning Environments –

explores all aspects of culturally responsive–sustaining education (CRSE) practices across learning environments through eight sessions – from creating student-centered learning environments to partnering with families using CRSE-aligned practices. The module shares practical advice and resources that enable teachers to create a CRSE-aligned curriculum and instructional strategies that both empower students with voice and choice and embrace relationships as a critical component of student success.

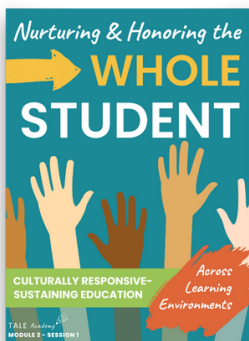


SESSIONS

Module 2 is broken up into 8 sessions. In every session, learners **engage** with their existing understanding of the specific topic; **explore** lessons learned from emergency remote teaching (ERT) as well as changes in teaching mindsets and practices necessary for teaching across learning environments (TALE); **establish** a foundation for implementing what we have learned in our own educational practices; and **extend** learning through linked resources related to the topics covered. Finally, every session ends with a quiz to **evaluate** learning and qualify educators to earn Continuing Teacher and Leader Education (CTLE) credits at the end of the module.

PREVIEWS

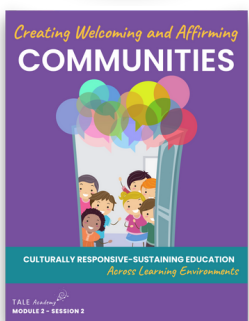
Every “Explore” section of a session begins with a summary of the content and ideas covered in the rest of the session. Preview these summaries to learn more about Module 2 and the fundamentals of teaching across learning environments!



Session 1: What Is CRSE and Why Does It Matter When Teaching Across Learning Environments?

We start this module by looking at how we can teach the whole student by understanding their cultural identities and creating student-centered learning environments. Using CRSE both as a lens and as a vehicle and leveraging the New York State CRSE Framework, we can reframe practices in ways that help us better connect with students and maximize their learning to improve social, emotional, and academic outcomes.

[!\[\]\(de95854c7ee024cfadc48187bbb781b2_img.jpg\) Preview Session 1](#)



Session 2: Cultivating Welcoming and Affirming Communities Across Learning Environments

Does your classroom embrace the four elements of a welcoming and affirming community? This session explores these elements and discusses strategies we can leverage in physical or virtual classrooms to help students feel a sense of belonging. This session helps us cultivate learning environments that ensure students feel safe, free to be themselves, valued, and connected to the classroom community.

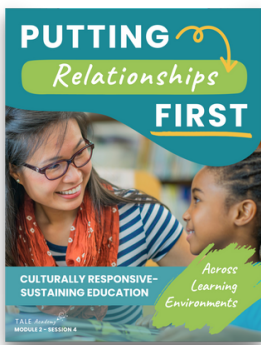
[!\[\]\(6a9b39b98eb945faa14c645ec99e4eaa_img.jpg\) Preview Session 2](#)



Session 3: A Seat at the Table: Student-Centered Approaches to Engage and Empower

As teachers, our job is to engage and empower students while fostering growth mindsets. In this session, we explore student-centered approaches that set a high bar for learning across learning environments. We also explore how backward design can allow for authentic student-centered engagement. The session concludes by exploring how we can help students develop a sense of ownership related to what they learn.

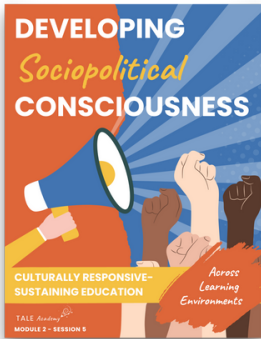
[!\[\]\(f1c5da15572e3e09d343161be98f508d_img.jpg\) Preview Session 3](#)



Session 4: Putting Relationships First

Our relationships with students are essential to their learning experiences – we need to know our students before we teach them. This session begins by exploring the importance of building these positive relationships with students, including knowing, understanding, and valuing their cultural contexts. We then explore the three foundations of building culturally responsive and sustaining relationships and conclude with ideas on how teachers can empower students as the authors of their own learning.

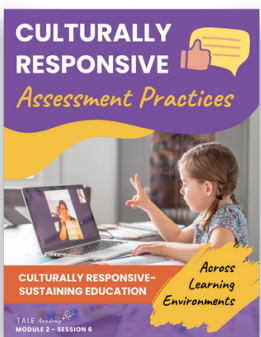
[Preview Session 4](#)



Session 5: Developing Sociopolitical Consciousness

Leveraging youth participatory action research (YPAR) as part of instructional design is one way to help students develop their own sociopolitical consciousness. The session shares nine steps of effective YPAR and questions students can ask themselves if they want to be changemakers in our society. These practices help students develop their own sociocultural responsiveness while creating learning opportunities that resonate with them emotionally and intellectually.

[Preview Session 5](#)



Session 6: Culturally Responsive Assessment Practices

We can't just change the way we teach and engage with students; we also must transform the way we assess learning. This session introduces culturally responsive authentic assessments, sharing examples of how we can adapt current practices to create CRSE-aligned assessments. In this session, we learn strategies for assessing student learning across environments and questions we can ask to identify, discuss, and dismantle implicit bias in assessments. The session concludes with ideas on how we can implement more equitable grading practices that are grounded in CRSE principles.

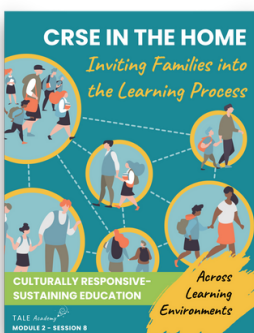
[Preview Session 6](#)



Session 7: Curriculum as Catalyst: Selecting Culturally Responsive Content

We continue exploring CRSE by examining how teachers can select culturally responsive content across learning environments to foster 21st-century skills. This session provides thoughts on how to develop a CRSE curriculum and how to check for representation, intersectionality, critique and challenge, and avoiding trauma. It concludes with a set of questions we can use when designing a curriculum, strategies for portability across in-person, remote, and hybrid environments, and thoughts on how to elevate student voice and choice in the learning process.

[Preview Session 7](#)



Session 8: CRSE in the Home: Inviting Families into the Learning Process

As we conclude Module 2, we explore how teachers can partner with families to better support their students and involve families and caregivers in the learning process. It looks at obstacles to family engagement and how CRSE-aligned practices can help mitigate these challenges, including how to make these practices portable across learning environments. This session concludes with helpful questions to consider when leveraging family engagement strategies and how the digital divide and digital literacy can impede family engagement.

[Preview Session 8](#)

TALE Academy



TEACHING ACROSS

LEARNING ENVIRONMENTS

www.tale-academy.com

*To enroll in the TALE Academy, visit
tale-academy.com/start-learning*



New York State
EDUCATION DEPARTMENT
Knowledge > Skill > Opportunity

The content of the TALE Academy was produced in whole or in part with funds from Contract C014452 and does not necessarily reflect the position or policy of the New York State Education Department (NYSED), nor does mention of trade names, commercial products, or organizations imply endorsement by NYSED.

In addition, NYSED, its employees, officers, and agencies make no representations as to the accuracy, completeness, currency, or suitability of the content herein and disclaim any express or implied warranty as to the same.