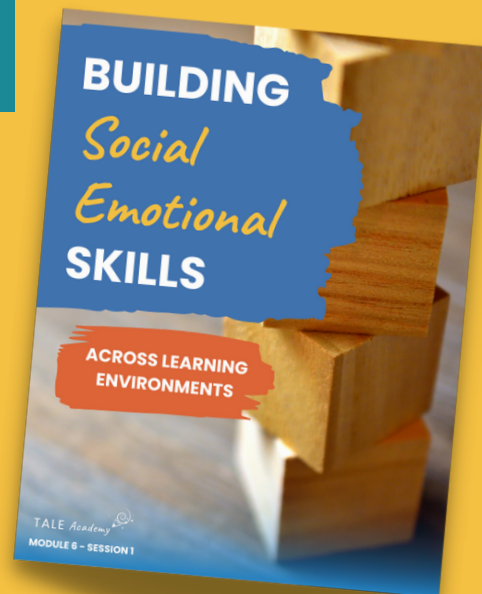


TEACHING ACROSS

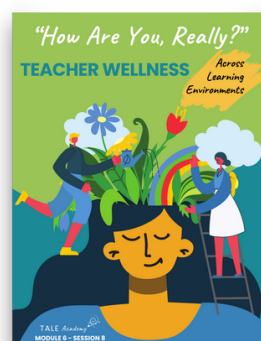
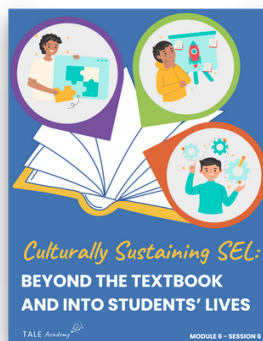
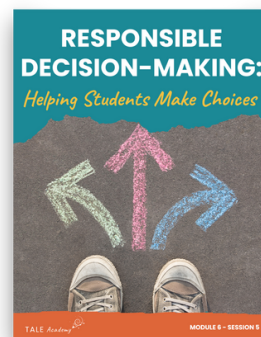
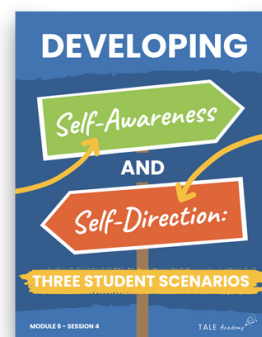
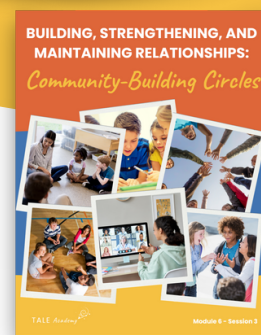
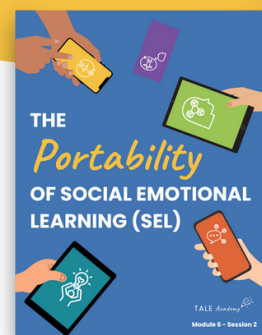
LEARNING ENVIRONMENTS

The TALE Academy is a series of free, virtual learning experiences available to all New York State educators and offers a rich array of resources on topics related to teaching across learning environments (TALE). The TALE Academy is built upon the work New York State educators carried out during emergency remote teaching (ERT) throughout the COVID-19 pandemic and extends it into the future. **TALE invites educators to think beyond online education to a broader perspective on teaching and learning that encompasses teaching across multiple learning environments (in-person, remote, and hybrid).**



MODULE 6

The pandemic took a significant toll on all of us – teachers, students, and families. Social emotional learning (SEL) in the school community is a key component to fueling our recovery from the pandemic. Throughout **Module 6 – Social Emotional Learning Across Learning Environments** – we focus on frameworks to ground our approach to SEL and discover strategies we can apply to create a supportive classroom climate (in-person, remote, or hybrid), build the skills students need to navigate their worlds, and integrate SEL into our instruction in meaningful and engaging ways.

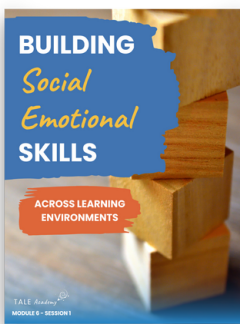


SESSIONS

Module 6 is broken up into 8 sessions. In every session, learners **engage** with their existing understanding of the specific topic; **explore** lessons learned from emergency remote teaching (ERT) as well as changes in teaching mindsets and practices necessary for teaching across learning environments (TALE); **establish** a foundation for implementing what we have learned in our own educational practices; and **extend** learning through linked resources related to the topics covered. Finally, every session ends with a quiz to **evaluate** learning and qualify educators to earn Continuing Teacher and Leader Education (CTLE) credits at the end of the module.

PREVIEWS

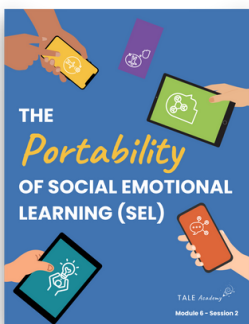
Every “Explore” section of a session begins with a summary of the content and ideas covered in the rest of the session. Preview these summaries to learn more about Module 6 and the fundamentals of teaching across learning environments!



Session 1: Teaching the Whole Learner

We start this module by introducing the frameworks we'll explore throughout our learning, starting with the New York State Social Emotional Learning Benchmarks, which show us how SEL can be integrated into instruction regardless of the learning environment. We also explore the Collaborative for Academic, Social, and Emotional Learning (CASEL) model's five areas of SEL competence and how they align with the New York State SEL Benchmarks. This session concludes by sharing three ways to integrate SEL into day-to-day instruction.

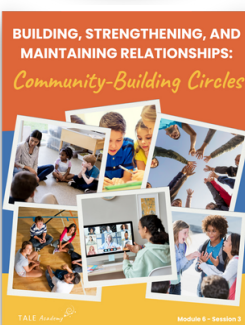
[!\[\]\(de95854c7ee024cfadc48187bbb781b2_img.jpg\) Preview Session 1](#)



Session 2: The Portable Practice of SEL

In this session, we consider the CASEL 5 social emotional learning (SEL) competencies through the lens of portability – the ability to take instructional practices or routines and shift them to another learning environment. We explore how to leverage the CASEL 5 competencies in portable, consistent, and achievable ways across the four key settings in which relationship-building occurs: in the classroom, school, community, and at home..

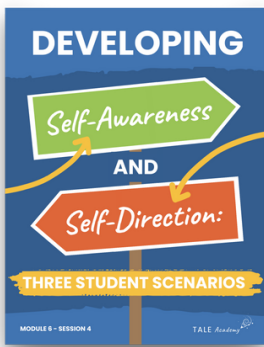
[!\[\]\(6a9b39b98eb945faa14c645ec99e4eaa_img.jpg\) Preview Session 2](#)



Session 3: Social Awareness and Relationship Building

Our classrooms are our communities, and our students need to master the SEL competencies of social awareness and interpersonal skills in order to thrive in school and beyond. This session provides a refresher on the key components of social awareness and relationship skills. We explore community-building circles, including five foundational principles, easy steps to execute this practice in our classrooms, and how to redesign this practice when teaching across learning environments.

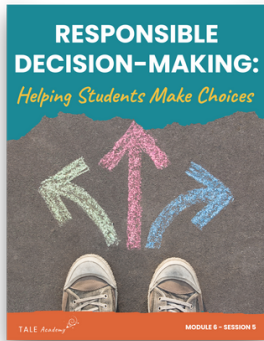
[!\[\]\(f1c5da15572e3e09d343161be98f508d_img.jpg\) Preview Session 3](#)



Session 4: Self-Awareness and Self-Direction

Helping students develop self-awareness leads them on the path towards self-direction, building key life skills for their development. This session looks at three student scenarios demonstrating how instruction and support can be delivered to help students develop their self-awareness and self-direction inside and outside the classroom and across learning environments. These scenarios give us ideas and strategies we can embed in our own instruction to help students on their path.

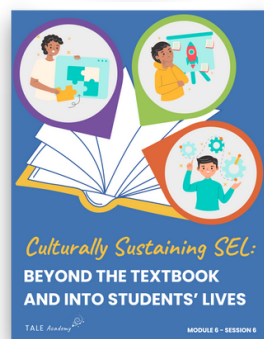
[Preview Session 4](#)



Session 5: Responsible Decision-Making

Responsible decision-making is another CASEL core competency students develop through SEL. This session provides an overview of the skills and indicators of responsible decision-making competence. It details the cognitive process for making a decision and how we can teach these skills in the classroom across learning environments. The session includes a self-assessment for responsible decision-making to help students pinpoint areas of strengths and weaknesses related to this competency.

[Preview Session 5](#)



Session 6: Culturally Responsive and Sustaining SEL

Social emotional learning (SEL) is not a stand-alone program. This session looks at ways we can integrate the principles of culturally responsive-sustaining education (CRSE) to design SEL experiences that are embedded in academics and portable across learning environments. We examine three strategies we can easily apply in our classrooms to make SEL more culturally responsive. The session concludes with two instructional practices – project-based learning and civic learning – that are great ways to authentically integrate SEL and CRSE to engage and empower students.

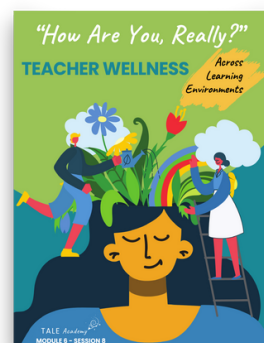
[Preview Session 6](#)



Session 7: Social Emotional Learning and Digital Citizenship

Our students are living in an increasingly digital world for which they need to develop specific navigational skills. This session introduces six core topics of digital citizenship and makes the connection between these topics and SEL through three guiding principles. We also explore how to discuss and teach digital citizenship by grade level and how we can model healthy online engagement in our classrooms.

[Preview Session 7](#)



Session 8: Social Emotional Skills and Well-Being for Educators

Taking care of ourselves isn't just good for our well-being; it also provides us an opportunity to show our students what managing emotions, setting personal goals, and investing in healthy relationships look like in difficult circumstances. This session allows us to consider how we can practice social emotional wellness for ourselves in ways that also positively model that behavior for our students. We review portable strategies for building resilience and additional resources we can leverage to support skill development.

[Preview Session 8](#)

TALE Academy



TEACHING ACROSS

LEARNING ENVIRONMENTS

www.tale-academy.com

*To enroll in the TALE Academy, visit
tale-academy.com/start-learning*



New York State
EDUCATION DEPARTMENT
Knowledge > Skill > Opportunity

The content of the TALE Academy was produced in whole or in part with funds from Contract C014452 and does not necessarily reflect the position or policy of the New York State Education Department (NYSED), nor does mention of trade names, commercial products, or organizations imply endorsement by NYSED.

In addition, NYSED, its employees, officers, and agencies make no representations as to the accuracy, completeness, currency, or suitability of the content herein and disclaim any express or implied warranty as to the same.